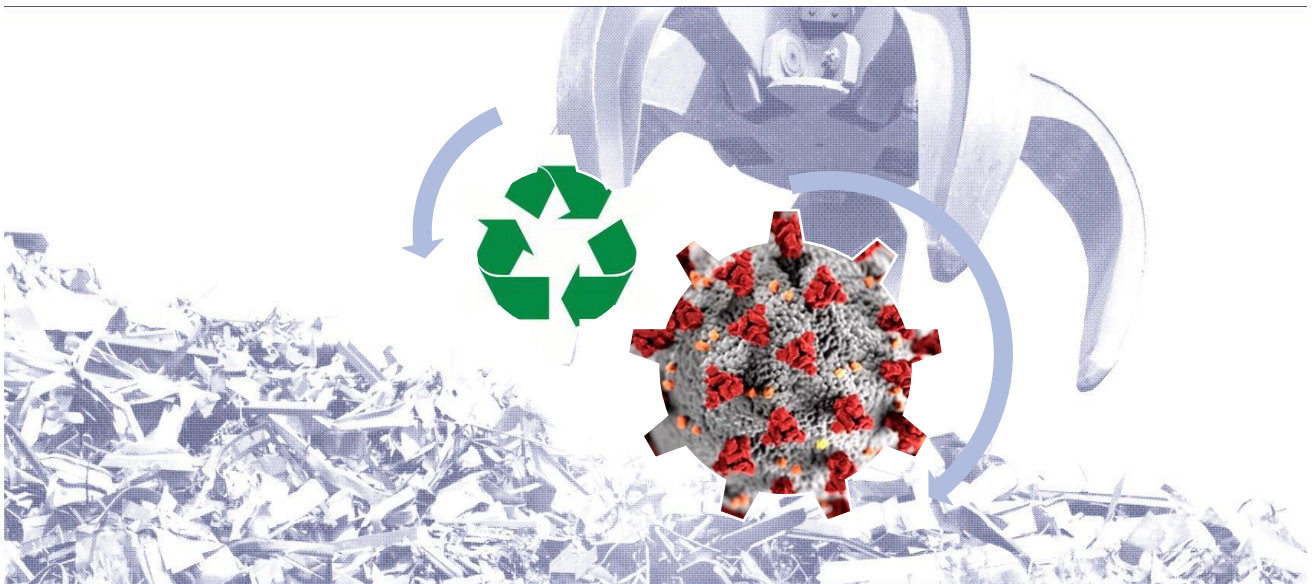




Date: March 19, 2020



Olgin Efune Recycling Company response to the COVID-19 virus

Recycling is an **essential** part of **everyday life**, and **OERC** remain open during this time.

"Your Recycling Partner"

Community,

Olgin Efune Recycling Company has strong roots in safety. Over the years our company has practiced a rigid safety program, resulting in a strong sense of family and security. Our employees look out for one another, as a result we have implemented a strong virus response program.

We are constantly and vigilantly monitoring the COVID-19 virus. Keeping up to date with the World Health Organization (WHO) and the Center for Disease Control (CDC) regarding all new information. OERC is following the guidelines put in place to reduce the spread of the virus, as such, we want you to know that we are committed **to staying open during the outbreak**, so long as it is deemed safe. Currently, according to the CDC, Arizona still presents as low risk.

At OERC, we want you to know that we are taking measures to help reduce the spread of the virus. Daily, we are thoroughly cleaning our facility, with extra emphasis on public areas which we clean multiple times per day. We are also asking employees who present with any form of sickness to remain home; if an employee feels ill and isn't presenting symptoms we request they also stay home. A few other items we have implemented:

- Stopped all international travel for OERC
- No handshaking or fist bumps
- In person meetings that can be done via phone are mandated
- At this time, OERC is asking visitors call our facility prior to arriving and we will most likely need to reschedule an in-person meeting for a later time
- Provided hand sanitizer spots throughout the facility for customers and employees
- Mandatory social distancing at the property, no employee is to be within in 6' of another employee unless it is absolutely necessary

As many of you know, recycling is an essential part of everyday life. Recycling is the first link in the U.S. manufacturing supply chain, supplying 40%, on average across all commodities, of this country's raw material needs. The U.S. steel industry, for example, relies on a steady supply of ferrous scrap from recyclers to supply its mills, without which they could not operate as 70% of all U.S. produced steel is made from ferrous scrap supplied by recyclers from across the country. Over three-quarters of U.S. paper mills utilize recovered paper from recycling operations for their daily production needs. This supply chain cannot be halted and restarted without significant supply disruptions that would ripple throughout the entire U.S. manufacturing chain.

Thank you for your understanding and cooperation during this difficult period. We realize the changes may be difficult, but we are making these decisions in an effort to best protect our employees and our valued customers.

Have a safe rest of your week,

The OERC family